

Network Products

For more detailed information, visit <http://enterprise.alcatel-lucent.com/>

OMNISWITCH 10K

Chassis based LAN switch for large campus networks and datacenter's core

- Chassis based LAN switch for large campus networks and datacenter's core
- 8 Slot, up to 320 GigE, 256 10GigE, 48 40GigE ports
- Redundant power, management and switch fabric
- Front to back cooling, ISSU, Virtual Chassis technology
- Advanced L3 routing: VRF, Multicast, IPv4 and IPv6
- Automated VM movement
- Automatic Fabric creation, SPB-M
- Programmable: RESTful API, OpenFlow and OpenStack



OMNISWITCH 6855/6865

Family of Hardened Gigabit Ethernet LAN switches for Intelligent Transportation, Utilities and Surveillance Verticals

- OS6865 models support 10G SFP+ uplinks, HPoE (> 60W PoE) and 1588v2 PTP
- OS6865-P16X has 8 PoE+/4 HPoE ports and 2 SFP/2 SFP+ uplink ports
- OS6855 family has:
 - 10-port, 14-port and 24-port models, GigE 1000Base-T/SFP and PoE versions
 - 24 port SFP model with SFP 10G uplinks and remote stacking up to 10km
 - Ability to handle extreme temperature, EMI/EMC & environmental conditions
 - Advanced L3 routing, Multicast, SPB-M
 - Fanless models, Support for Remote stacking, Stacks up to 8
 - Access Security & Policy enforcement
 - Zero touch configuration



OMNISWITCH 9900

Modular Ethernet LAN switch for demanding enterprise, service provider and data center environments

- Offers a broad range of modules supporting 1 GigE, 10 GigE and 40 GigE ports in an 11-RU chassis form factor
- Offers the highest density of Power over Ethernet (PoE) in its class, scaling up to 10800 W of inline PoE power
- Its modular design provides investment protection with future inline upgrades to high density 25G/40G/50G/100G interfaces
- Advanced L3 routing: VRF, Multicast, IPv4 and IPv6
- Universal Network Profiles; Orchestrated Policy based VM movement
- Access security and policy enforcement
- Automatic Fabric creation, Virtual chassis, SPB-M, IP routing protocols
- SDN programmability: RESTful API, Python and OpenStack



OMNISWITCH 6450 (MODEL 24 AND 48)

Stackable Gigabit and Fast Ethernet LAN switch for campus network access and Metro access

- 24-port and 48-port models with two GigE or 10GigE uplinks, RJ45,
- SFP and PoE+ versions
- Stacks up to 8 (up to 10km), optional back-up power
- Soft upgrades: GigE to 10GigE uplinks, Fast Ethernet to GigE access
- Basic L3 routing: IPv4 and IPv6, OpenFlow
- Access security and policy enforcement
- Optional Metro Ethernet features license, as well as IEEE 1588 version



OMNISWITCH 6900

Core and distribution for campus networks, Top-of-Rack (ToR) for Data Center

- 20-port and 40-port 10 GigE 10GBASE-T/10GBase-X models
- 32-port QSFP+ 40 GigE/4x10 GigE and 72-port SFP Plus models
- Up to 104 10 GigE, 56 10GBASE-T, 32 40 GigE, 24 x 2/4/8 Fiber Channel ports
- ISSU, Virtual Chassis technology
- Advanced L3 routing: VRF, Multicast, IPv4 and IPv6
- Universal Network Profiles; Orchestrated Policy based VM movement
- Automatic Fabric creation, Virtual chassis, SPB-M, IP routing protocols
- SDN programmability: RESTful API, Python, OpenFlow and OpenStack



OMNISWITCH 6450 (MODEL 10)

Stackable Gigabit and Fast Ethernet LAN switch for small offices and Metro access

- 8-port models, with two GigE SFP uplinks,
- Fast Ethernet, GigE 1000BASE-T and PoE+ versions
- Compact form factor, fanless, stacks up to 4
- Soft upgrades: Fast Ethernet to GigE, Basic L3 routing: IPv4 and IPv6
- Basic L3 routing: IPv4 and IPv6, OpenFlow
- Access security and policy enforcement
- Optional Metro Ethernet features license, as well as IEEE 1588 version



OMNISWITCH 6860/E

Gigabit stackable LAN switch for campus network Unified Access and aggregation

- 24-port and 48-port models, four 10GigE SFP+ uplinks,
- GigE 1000BASE-T/SFP and PoE+ versions
- Enhanced (E) models with co-CPU, 60 W PoE and EMP
- Stacks up to 8, optional backup power, front to back cooling
- Advanced L3 routing: VRF, Multicast, IPv4 and IPv6
- Built-in Application Visibility, and Control
- Remote Stacking (up to 100m) with 40G, 80G, and 160G options
- Access security and policy enforcement, SPB-M
- Programmable: RESTful API, OpenFlow and OpenStack



OMNISWITCH 6350

Gigabit Ethernet LAN switch for small business

- 10 port standalone models (PoE+, non-PoE) with two RJ45/SFP GigE combo ports
- 24/48 port stackable models (PoE+, non-PoE) with four SFP
- uplink/stacking ports
- Fanless models available
- Static L3 routing: IPv4 and IPv6
- Access security and policy enforcement
- Zero-touch configuration capable with OmniPCX Office



OMNIACCESS INSTANT ACCESS POINTS (IAP)

Comprehensive WiFi solution for small to medium locations

- Virtual WLAN control built in Access Points
- Supports 10's of local Wireless Access Points
- Integrated security with access control and role based access
- MU-MIMO Client Match technology and adaptive RF management
- High Capacity IEEE 802.11ac wave 2 access point
- Cost effective IEEE 802.11n access points
- uPNP, DLNA, Airprint and Airplay support



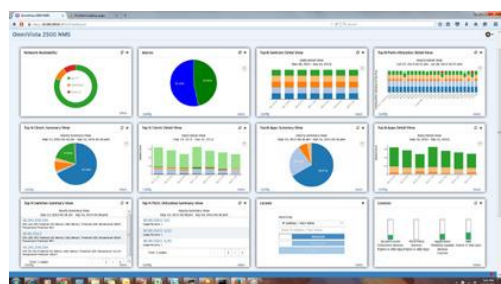
OMNIACCESS WLAN CONTROL AND ACCESS POINTS

Comprehensive WiFi solution for enterprise, education, hospitality and harsh environments

- Central WLAN control with one or more cooperating controllers
- Supports 1000's of
 - Local Wireless Access Points
 - Remote Wireless Access Points
 - Remote VPN users
- Integrated security with firewall, role based access
- MU-MIMO Client Match technology and adaptive RF management
- High Capacity IEEE 802.11ac wave 2 access point
- Cost effective IEEE 802.11n access points
- Zero touch deployment remote access points
- uPNP, DLNA, Airprint and Airplay support
- AppRF – Application visibility up to 1500 Applications



OMNIVISTA 2500 NETWORK MANAGEMENT SYSTEM (NMS)



Open flexible platform

- Convenient Virtual appliance installation supporting Virtualization platforms (VmWare ESXi & Microsoft Hyper-V) and major operating systems
- Web 2.0, HTML5 access from any major browser, including tablets
- RESTful APIs enabling easy development of ecosystem and custom applications

Monitoring and Life cycle operations

- Web based topology view with real-time device health status
- Wired /Wireless
- Dashboard with customizable widgets for instant key performances indicators visualization and network health monitoring
- Device configuration backup and restore operations with firmware and version management
- Search and pinpoint device and user location simplifying network connectivity issue

Smart Analytics

- Dashboard reporting relevant Users, Ports, Switches, and Network health statistics
- Predictive analysis for network infrastructure capacity planning and utilization pattern reporting
- Application Visibility focusing on actual application usage and network bandwidth consumption, for policy enforcement and application prioritization
- Analytics engine with in-depth charts for usage and statistics reports

Unified Access management

- Unified single user interface for dynamic role based policies across wired and wireless infrastructure
- Integrates with ClearPass for BYOD services and Authentication

Data Center management

- End-to-end view and operation simplification between physical and virtual network infrastructure operations
- Interfaces with VMware vCenter, Microsoft Hyper-V 2012/2016 and Citrix XenServer for virtual machine discovery and inventory
- Real time network location tracking between VM and its network location
- VXLAN and VXLAN gateway configuration

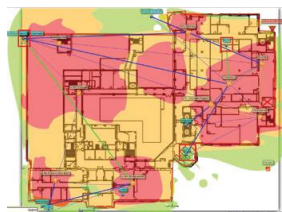
Quarantine management

- Threat mitigation through a secure perimeter against intrusion and malware attacks
- Remediation through various actions such as quarantine VLAN, port shut-down

OMNIVISTA 3600 AIR MANAGER (AM)

Designated management system for OmniAccess WLAN deployments

- Wireless network management system
- Centralized visibility and control over wireless networks
- Real-time user and device monitoring
- Centralized configuration
- User, session and device monitoring
- Real-time location tracking information
- RF planning with VisualRF module
- AppRF – Application visibility Dashboard
- UCC – UCC dashboard and debugging
- Clarity – User association diagnostics and debugging



CLEARPASS POLICY MANAGER

Policy Management System for enterprises, schools, universities, hospitals, hotel and retail

- Premium Policy Management for granular security
- Integrates with Omnivista 2500, enhances Unified Access
- Device on boarding and management
- Guest Access with advertisement
- Purpose-built appliance and virtual environment versions